

# Grapher 25 New Features

## What's New in Grapher v25 [🔗](#)

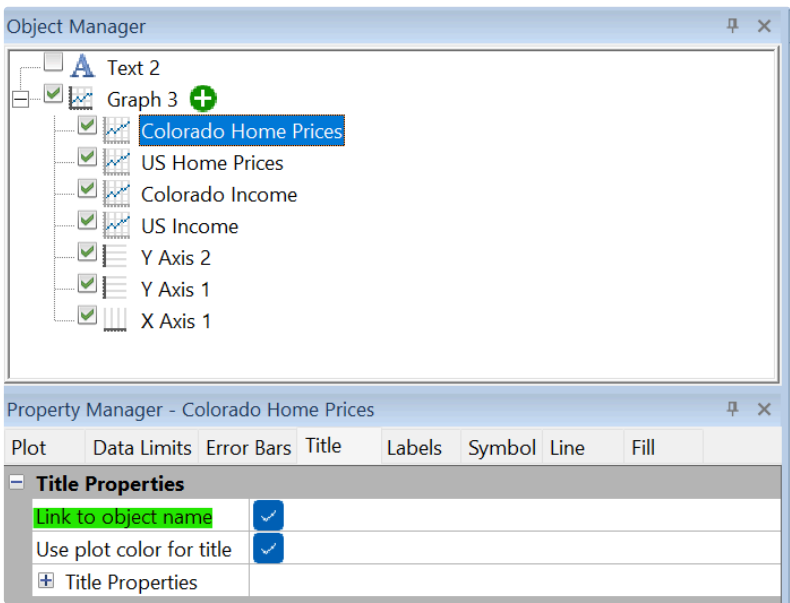
There are several new features in the latest release of Grapher! The top new features are listed below. Full help topics for these new features can be found in the help contained in the Grapher application.

### -Top Features in Grapher's Latest Release- [🔗](#)

#### New Features [🔗](#)

##### Link title to object name [🔗](#)

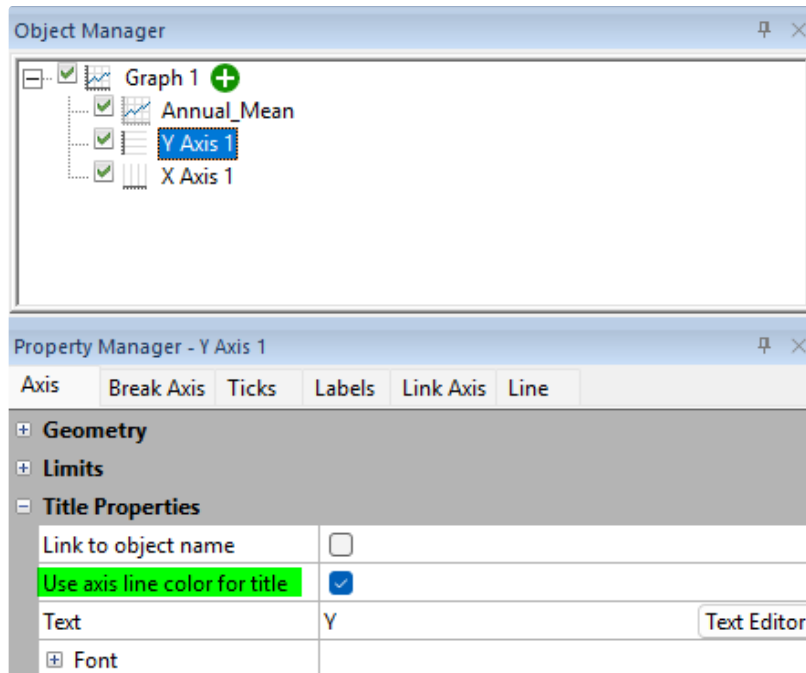
Now you can link the title of any object directly to its name in the Object Manager, eliminating the need for manual updates to axes titles or legends.



Simply enable the "Link to Object Name" checkbox and watch your titles update automatically.

##### Use axis color for title [🔗](#)

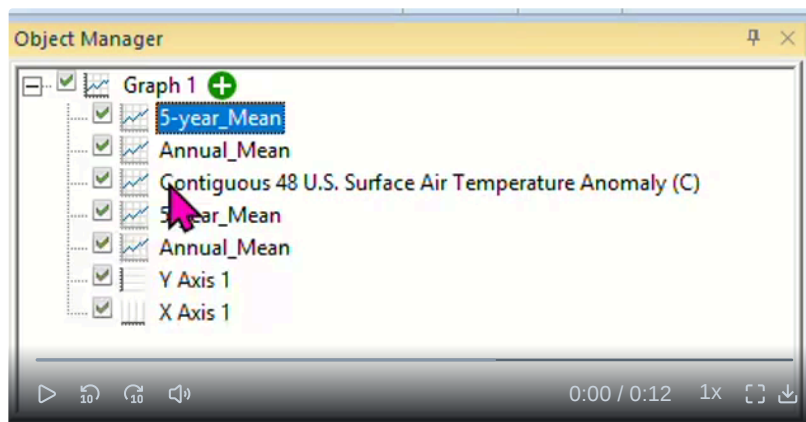
You can use this feature to link the title text color to the axis label color, this removes the need to manually adjust the color of your title.



Simply enable the “Use axis line color for title” checkbox and your title color will change automatically.

## Toggle visibility for multiple objects at once [🔗](#)

Now you can select multiple objects in the Object Manager and toggle the visibility all at once by clicking the checkbox next to one of the selected objects. This feature will make creating the graph you want that much easier.

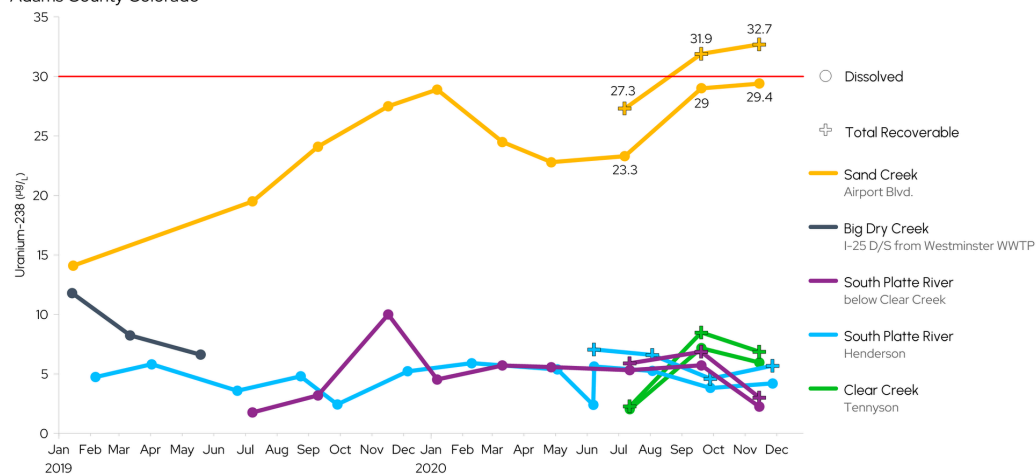


## Improvements [🔗](#)

### Coincident Major/ Minor Ticks [🔗](#)

Date/time axes now look better than ever! Enable minor ticks to coincide with major ticks without needing workarounds, giving you cleaner, more professional axis labels.

**Dissolved and Total Uranium-238 Concentration in Surficial Water**  
Adams County Colorado



## Bar Chart Improvements [🔗](#)

Bar charts are among the most used plot types in Grapher! Here are a couple of improvements that will hopefully save users from encountering some very frustrating experiences.

- **Log Scale Adjustments:** Bar charts now automatically adjust when switching between log and linear scales, ensuring base values make sense with each setting.
- **Better Axis Limit Defaults:** Enjoy improved defaults for axis limits, so your charts look polished right from the start.