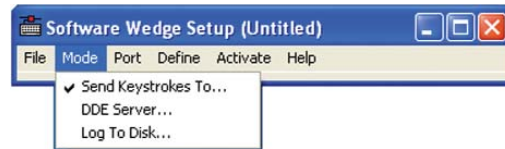


## WinWedge® and WinWedge Pro

### Set-Up is as Easy as 1-2-3-4

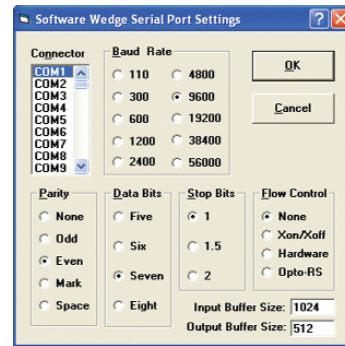
#### Step 1.

Use the Mode Menu to configure WinWedge to send data to other programs either by simulating “keystrokes” or using Dynamic Data Exchange (DDE). Or capture all serial data directly to a disk file.



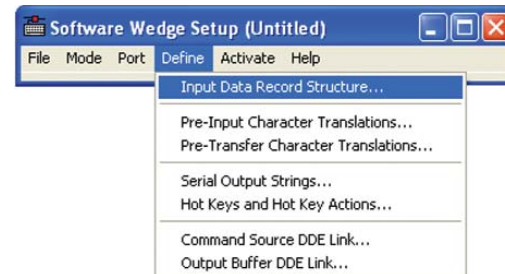
#### Step 2.

Select the communications settings for your serial device from the “Port Settings” window. Use the built-in diagnostic tools to determine how data is transmitted from your device.



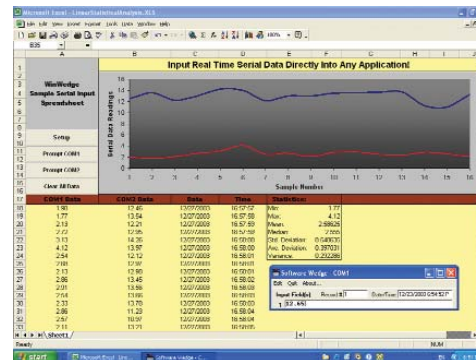
#### Step 3.

Use the Define Menu to specify how to parse, filter, and format your data so that it fits the exact format required by your application. Define “automatic” and “hot key” controlled output data to be sent to your serial device.



#### Step 4.

Activate WinWedge and watch the data from your serial devices “pop” into your application. Create graphs in your application that automatically update or do real-time data analysis as needed.



2101 Brandywine Street  
Philadelphia PA 19130 USA

TEL: 800 722 6004  
215 496 0222  
FAX: 215 496 0322  
WEB: www.TALtech.com

FREE DEMOS AVAILABLE AT WWW.TALtech.COM  
DATA COLLECTION • COMMUNICATION • BAR CODE SOFTWARE SOLUTIONS

