

# Remark Office OMR 12 – New Features & Enhancements

## Remark Office OMR version 12.0 – Release June 2025

\* Indicates a customer request

### Data Center/General New Features

**\*Anchor (Corner) Marks Support:** Forms can now include corner marks for improved recognition on tightly spaced forms. Even when forms are skewed or offset, Remark Office OMR ensures accurate reading using these marks.

**\*Remark AI Assistant:** Remark Office OMR now includes an AI Assistant to streamline your experience. Whether you're selecting the most suitable report for student performance or improving recognition results, the Remark AI Assistant provides guidance to help you utilize Remark's full potential.

**\*Change Tracking:** Easily track modifications within the data grid using cell indicators. Hover over a cell to view detailed change information, and export changes to Excel for added transparency and data integrity.

**\*Customizable Exception Colors:** Set personalized colors for flags during Review Exceptions for improved customization and clarity.

**\*Enhanced Unrecognized Images Queue:** Review unrecognized form images even after concluding your Remark session. This feature supports unattended scanning and provides flexibility by enabling later review.

**\*Saved Encoding Options:** When exporting data to various formats the last used encoding preferences are saved for future use to streamline your workflow.

**Updated Menus:** Software menus have been restructured for better logic and usability.

### Data Center/General Updates

**\*Review Exceptions Default Update:** The default review setting now searches by row. Changes to this setting are retained after closing Remark.

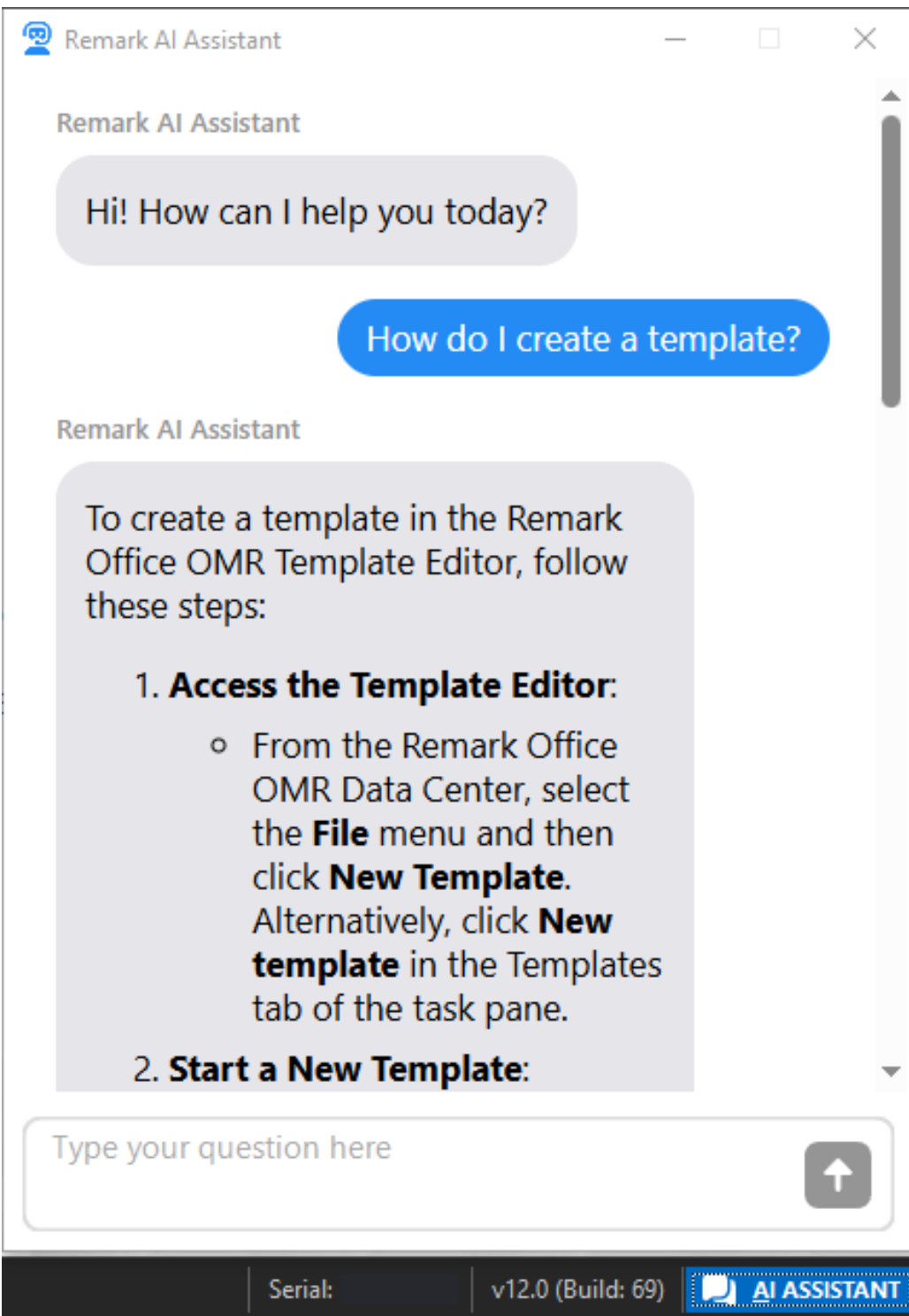
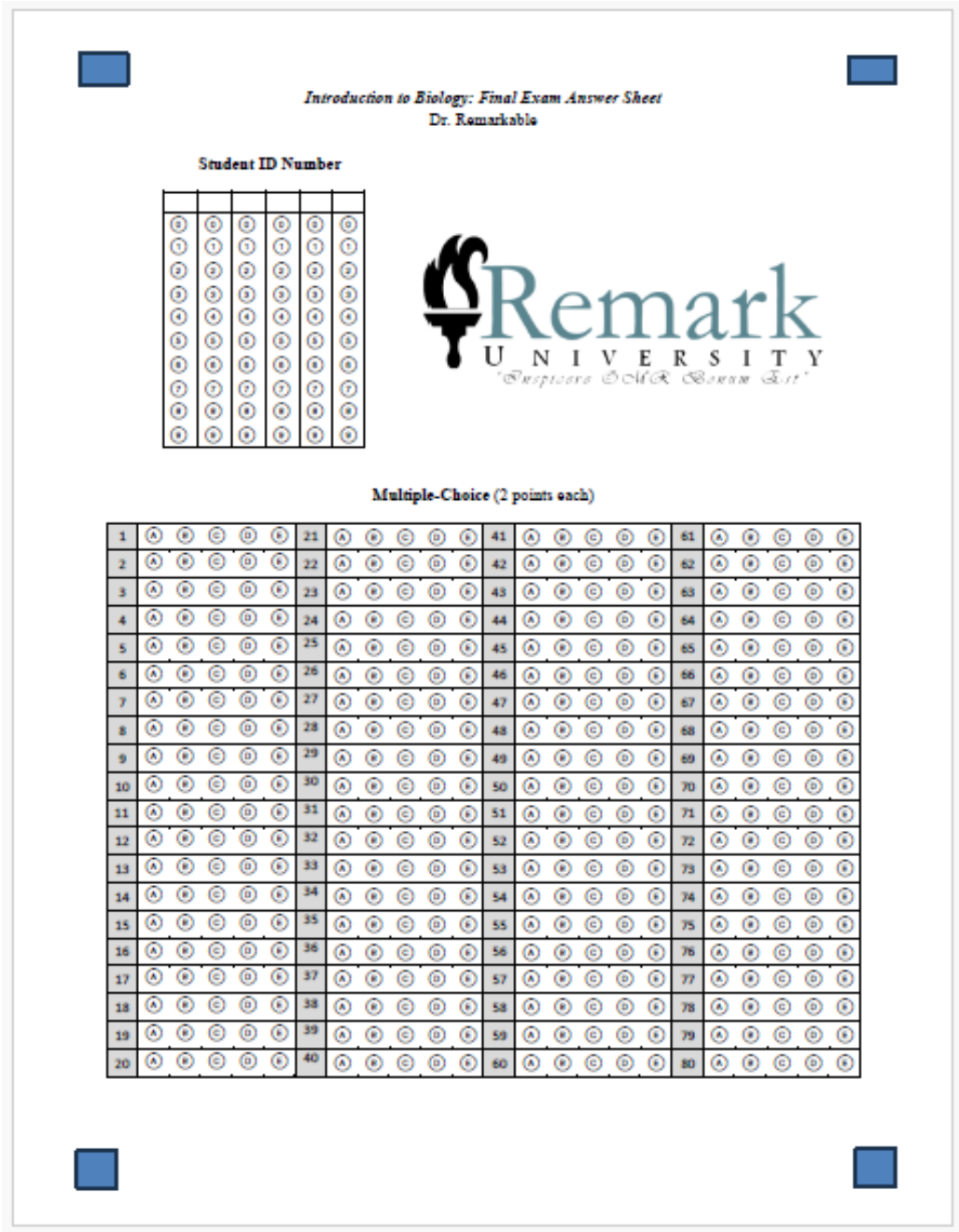
**\*Illegal Characters in Image Archives:** Illegal characters in archived image names are now replaced with underscores.

**\*Input Mask Issue Resolved:** Fixed an issue where the input mask intermittently failed in OMR regions.

**\*OMR Regions Shift Fix:** Corrected a bug causing OMR regions to appear shifted during processing if part of the region was empty.

**\*33002 Application Error Fix:** Resolved a “33002 Application Error” caused by the date option in the file name builder.

**Value Cannot Be Null Error Fix:** Fixed a “Value Cannot Be Null” error for multi-page forms using “do not read” form/page tracking.



### Remark Quick Stats New Features

**Student Test Report:** Generate annotated reports featuring grade information directly on scanned test images.

**Easy Answer Key Selection:** Select an answer key for your test when launching Quick Grade.

**\*Bulk Question Text Input:** Add question text to multiple questions in the answer key by copying and pasting from your source file. This feature simplifies managing templates with numerous answer keys.

**\*Partial Credit Import:** Import partial credit for multiple questions at once, saving time during answer key setup.

**\*Total Scaled Score:** Define a total scaled score for all sections in the Student Achievement report, alongside individual scaled scores for each section. This feature is great for seeing an overall score in addition to individual scores.

**\*Expanded Excel Export:** Include Incorrect Response and Analysis Response reports in your Excel export for comprehensive reporting.

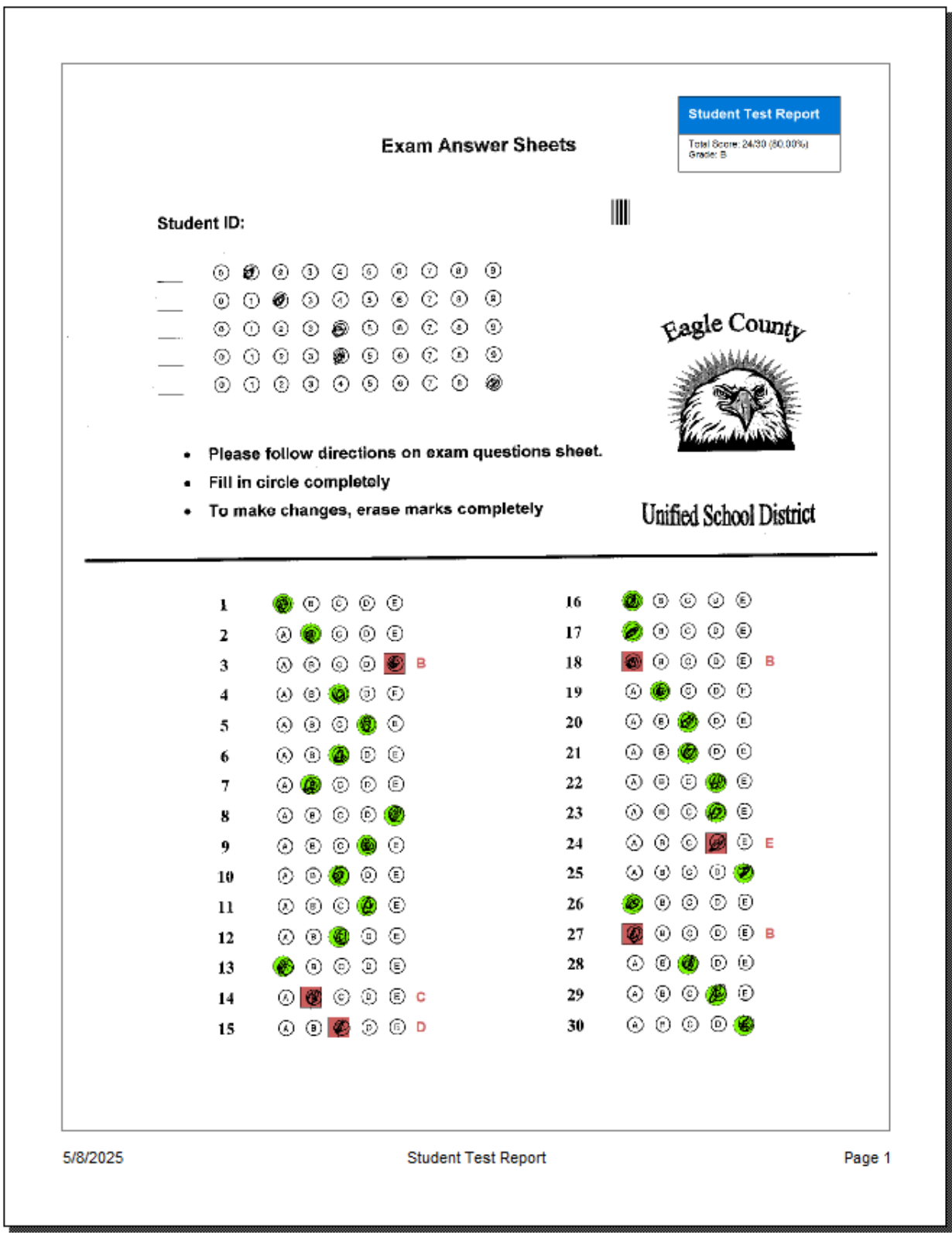
**\*Custom Labels in Excel Export:** Export reports with custom labels created in the report's properties. These labels are now included in the Excel file.

**\*Student Grade Report Reformatting:** The report now adjusts layout dynamically based on the number of questions.

**\*Turn Off Percentages in Item Analysis Graph Report:** Disable percentages for the “203 – Item Analysis Graph Report” for tailored reporting.

**Streamlined Export Options:** Simplified data export options for improved usability.

**\*PDF Export for Right-to-Left Languages:** Export reports in languages with right-to-left formatting.



### Remark Quick Stats Updates

**\*Index Out of Bounds Error Fix:** Resolved an “index out of bounds” error when using advanced multiple test versions and mapping the last question.

### Template Editor New Features

**Updated Interface:** The region property screens have been updated to improve speed and performance and to better organize all of the available options.

**\*Automatic Region Numbering:** Automatically number region names in sequential order when creating OMR regions with multiple questions.

### Template Editor Updates

**\*Performance Optimization:** Improved performance when opening regions by rearranging items more logically.

**\*ICR Language Options:** Language lists now align with the selected ICR type.

