

What's new in SPSS Statistics 26

Execute New Quantile Regression Analysis

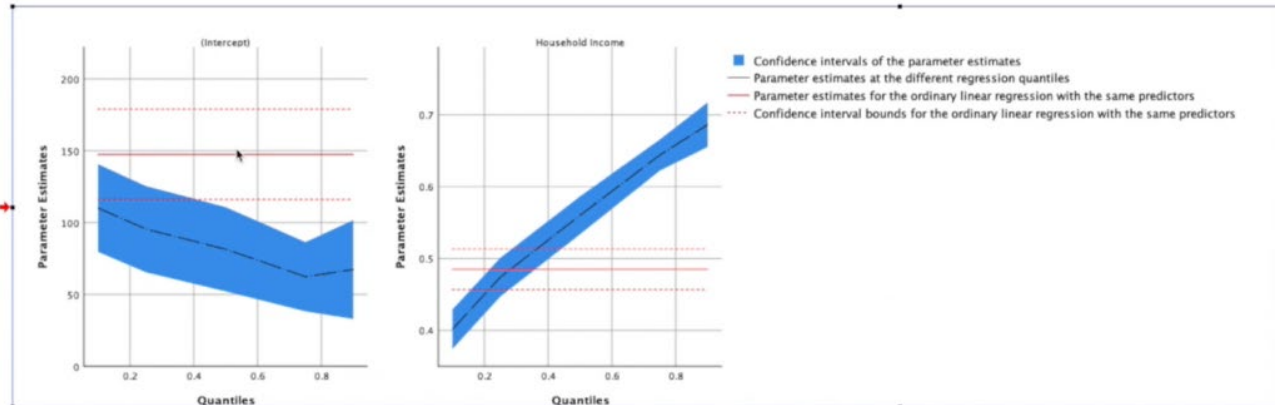
Quantile = 0.9

Parameter Estimates^{a,b}

Parameter	Coefficient	Std. Error	t	df	Sig.	95% Confidence Interval	
						Lower Bound	Upper Bound
(Intercept)	67.351	17.4512	3.859	233	.000	32.969	101.733
Household Income	.686	.0157	43.681	233	.000	.655	.717

a. Dependent Variable: Household Food Expenditure
b. Model: (Intercept), Household Income

Plot of the Estimated Parameters



Compare Two ROC Curves

*Output4 [Document4] - IBM SPSS Statistics Viewer

File Edit View Data Transform Insert Format Analyze Graphs Utilities Extensions Window Help

Output

- Log
- ROC Analysis
 - Title
 - Notes
 - Warnings
 - Case Processing
 - ROC Curve
 - Precision-Recall Curve
 - Area Under the ROC Curve
 - Independent Groups

ROC Analysis

Warnings

The test result variable(s): Years with current employer has at least one tie between the positive actual state group and the negative actual state group. Statistics may be biased.

Case Processing Summary

Level of education	Previously defaulted	Valid N (listwise)
< 3.00	Positive ^a	432
	Negative	138
≥ 3.00	Positive ^a	85
	Negative	45
Valid		700
Missing		150
Total		850

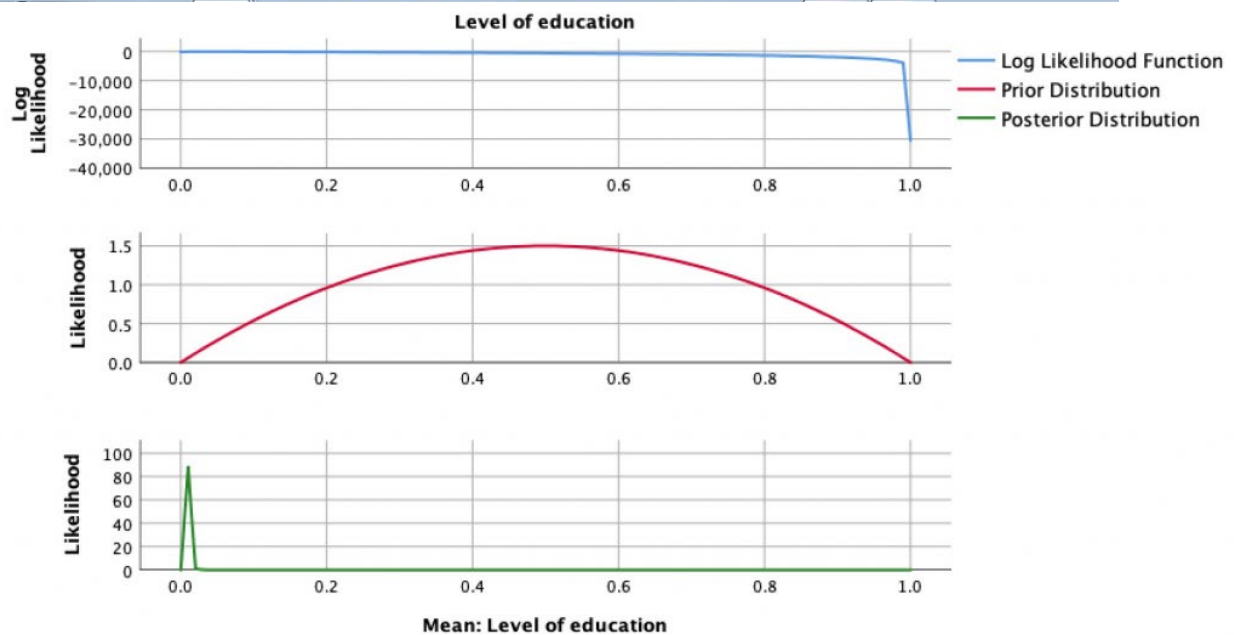
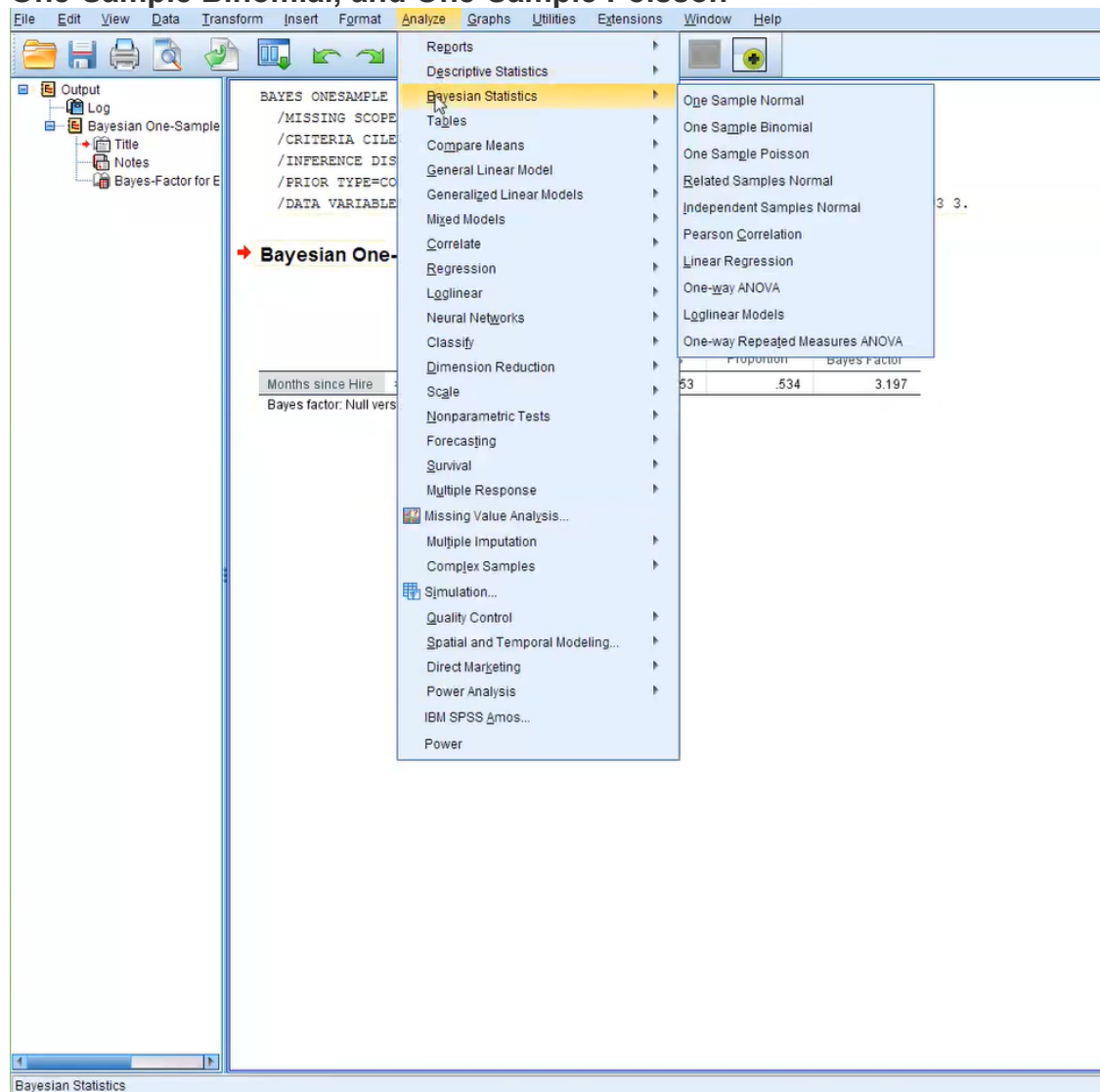
Larger values of the test result variable(s) indicate stronger evidence for a positive actual state.

a. The positive actual state is No.

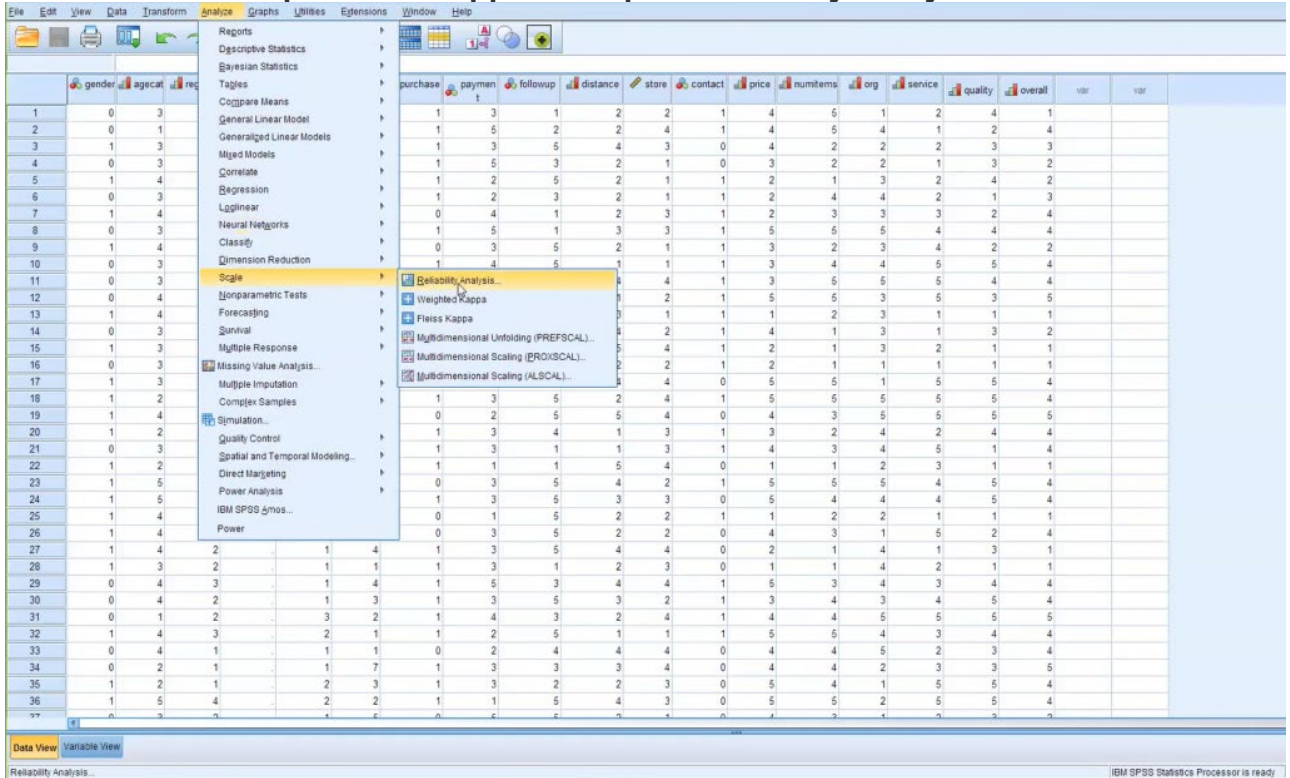
ROC Curve

The ROC Curve plot shows Sensitivity on the y-axis (ranging from 0.0 to 1.0) and 1 - Specificity on the x-axis (ranging from 0.0 to 1.0). Two curves are plotted: a blue curve for 'Years with current employer (Level of education < 3)' and a red curve for 'Years with current employer (Level of education ≥ 3)'. The blue curve is consistently higher than the red curve, indicating better predictive performance for the group with education level < 3.

Run Enhanced Bayesian Procedures for One-Way Repeated Measures ANOVA, One-Sample Binomial, and One-Sample Poisson



Utilize Fleiss Multiple Rater Kappa for Improved Survey Analysis

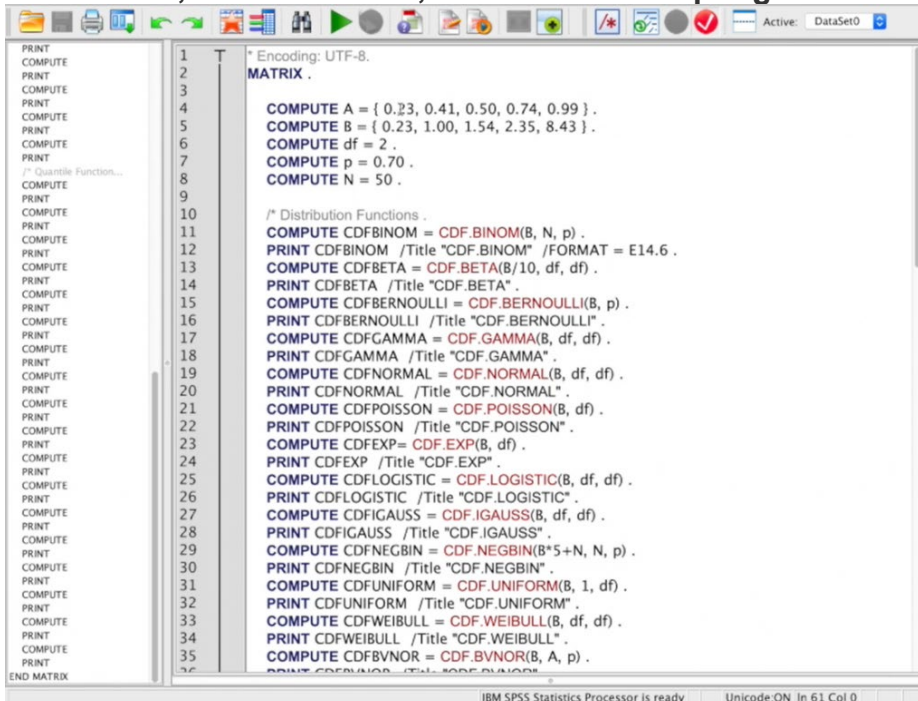


Overall Agreement^a

	Kappa	Asymptotic			Asymptotic 95% Confidence Interval	
		Standard Error	z	Sig.	Lower Bound	Upper Bound
Overall Agreement	-.014	.005	-2.619	.009	-.014	-.014

a. Sample data contains 474 effective subjects and 2 raters.

Run MIXED, GENLINUX, and MATRIX Scripting Enhancements



Replace IBM SPSS Collaboration and Deployment Services for Processing SPSS Statistics Jobs with New Production Facility Enhancements

