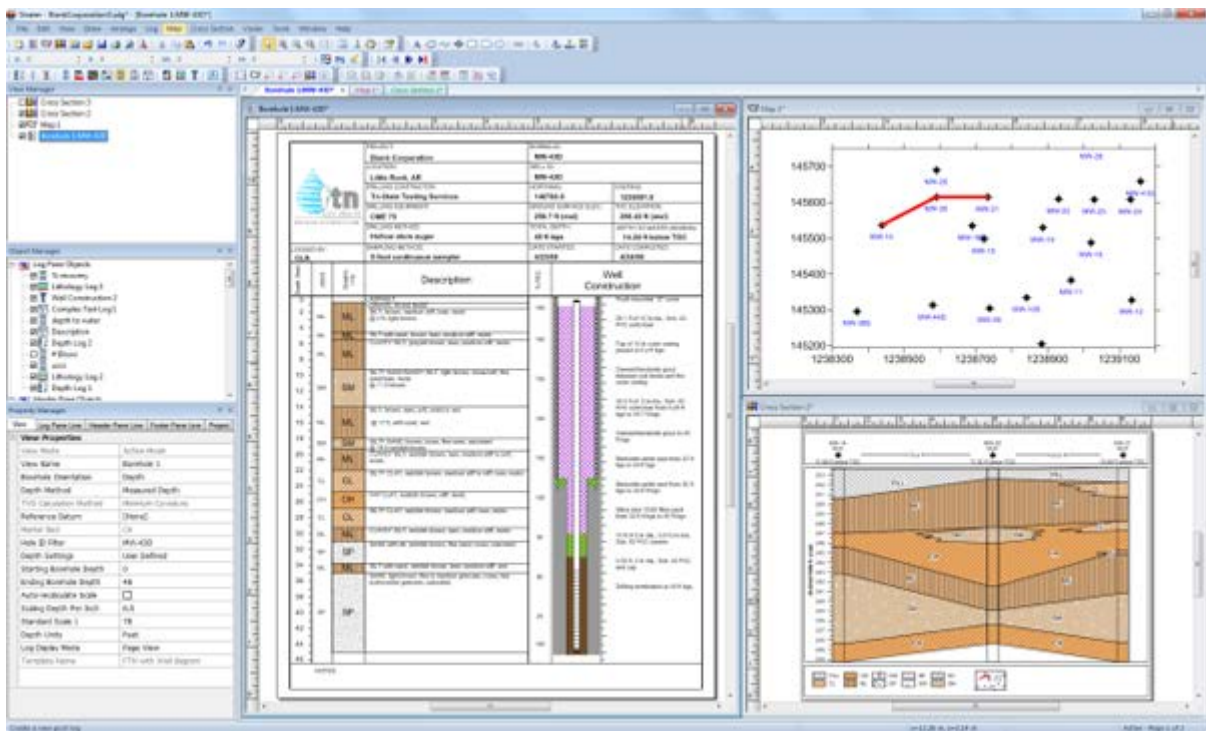


Feature - Projects

We want to make sure you can have all your information easily accessible in one project file. Strater projects are made up of views (borehole views, map views, and cross section views) and data tables. The graphical display in each of the views is based on the data loaded into the data tables. It's as simple as that!

Strater allows you to create multiple views and data tables and store them all in a single project. Each view can contain a different design, allowing tremendous flexibility in the presentation of your data. You can easily switch between views and data tables by clicking on their tabs at the top of the window.



Work seamlessly with all your data to create informative borehole logs, cross sections & location maps.