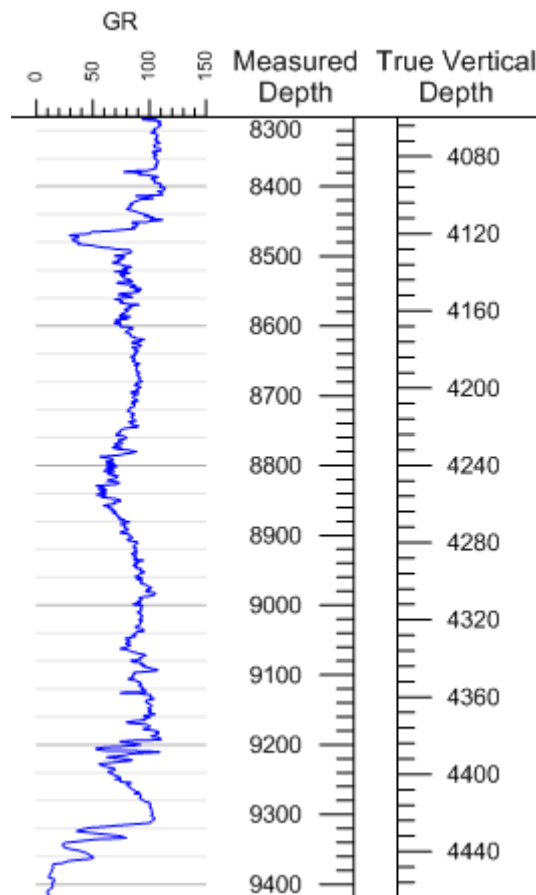


## Feature - True Vertical Depth

Strater allows you the flexibility of displaying your data in measured depth or true vertical depth! Specify the inclination and azimuth information for your hole either in the collars table (a single set of values for the entire hole), in the data table with the actual hole data, or load a deviation survey into a survey table. With a simple click, update the entire display to show measured depth or true vertical depth. Choose between five different calculation methods to perform the measured depth to true vertical depth conversion.

Depth logs can be individually set to show measured depth or true vertical depth independent of the borehole display, allowing you to create one depth log showing measured depth and another showing true vertical depth side-by-side.



*Display logs and depth scales in either Measured Depth or True Vertical Depth.*