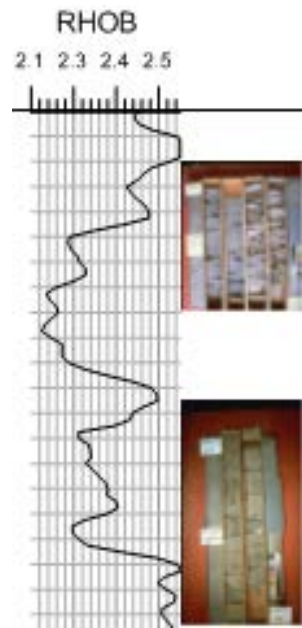


## Feature - Supported File Formats

Strater supports many data and import/export formats.

Data Files	Import	Export
<p><b>Open Data:</b></p> <ul style="list-style-type: none"> <li>Access Database (ACCDB, MDB)</li> <li>ASCII Data (DAT)</li> <li>Atlas Boundary (BNA)</li> <li>Comma Separated Variables (CSV)</li> <li>Database (DBF)</li> <li>Excel Spreadsheet (XLS, XLSX, XLSM)</li> <li>Golden Software Blanking (BLN)</li> <li>LAS Files (LAS)</li> <li>ODBC Database Connection</li> <li>P1 Data Exchange Format (P1)</li> <li>SEG Data Exchange Format (SEG)</li> <li>Sylk Spreadsheet (SLK)</li> <li>Text Data (TXT)</li> </ul> <p><b>Save Data:</b></p> <ul style="list-style-type: none"> <li>ASCII Data (DAT)</li> <li>Atlas Boundary (BNA)</li> <li>Comma Separated Variables (CSV)</li> <li>Excel Spreadsheet (XLS, XLSX)</li> <li>Golden Software Blanking (BLN)</li> <li>Sylk Spreadsheet (SLK)</li> <li>Text Data (TXT)</li> </ul>	<ul style="list-style-type: none"> <li>ACR-NEMA Medical Image (AN1, AN2)</li> <li>Atlas Boundary (BNA)</li> <li>AutoCAD Drawing (DXF)</li> <li>AVS X-Image (X, XIMG)</li> <li>DICOM3 Medical Image (DIC, DCM)</li> <li>ER Mapper (ECW)</li> <li>ESRI ArcInfo Export Format (E00)</li> <li>ESRI Shapefile (SHP)</li> <li>GIF Image (GIF)</li> <li>Golden Software Blanking (BLN)</li> <li>Golden Software Boundary (GSB)</li> <li>Golden Software Interchange (GSI)</li> <li>Golden Software PlotCall (PLT)</li> <li>JPEG Compressed Bitmap (JPG, JPEG)</li> <li>JPEG-2000 Bitmap (JP2, J2K, JPC, JPT, JPEG2000, J2000)</li> <li>LizardTech MrSID Image (SID)</li> <li>MapInfo Interchange Format (MIF)</li> <li>PDF (Raster) (PDF)</li> <li>PNM/PPM/PGM/PBM Image (PNM, PPM, PGM, PBM)</li> <li>Portable Network Graphics (PNG)</li> <li>SDTS TVP (CATD.DDF, TAR, GZ, ZIP, TGZ)</li> <li>SEG-P1 Exchange Format (SP1, SEG)</li> <li>SGI-RGB Image (RGB, RGBA, BW)</li> <li>Stanford PLY (PLY)</li> <li>Sun Raster Image (SUN, RAS)</li> <li>Tagged Image (TIF, TIFF)</li> <li>Targa (TrueVision) (TGA)</li> <li>USGS Digital Line Graph (DLG, LGO, LGS)</li> <li>Visualization Toolkit (VTK)</li> <li>Windows Bitmap (BMP)</li> <li>Windows Enhanced Metafile (EMF)</li> <li>Windows Metafile (WMF)</li> </ul>	<ul style="list-style-type: none"> <li>Export log to LAS</li> <li>Export XYZ Data</li> <li>Atlas Boundary (BNA)</li> <li>AutoCAD DXF Drawing (DXF)</li> <li>AVS X-Image (X, XIMG)</li> <li>Encapsulated Postscript (EPS)</li> <li>ESRI Shapefile (SHP)</li> <li>GIF Image (GIF)</li> <li>Golden Software Blanking (BLN)</li> <li>Golden Software Boundary (GSB)</li> <li>Golden Software Interchange (GSI)</li> <li>JPEG Compressed Bitmap (JPG, JPEG)</li> <li>JPEG-2000 Bitmap (JP2, J2K, JPC, JPT, JPEG2000, J2000)</li> <li>MapInfo Interchange Format (MIF)</li> <li>PDF (Raster) (PDF)</li> <li>PDF (Vector) (PDF)</li> <li>PNM/PPM/PGM/PBM Image (PNM, PPM, PGM, PBM)</li> <li>Portable Network Graphics (PNG)</li> <li>SGI-RGB Image (RGB, RGBA)</li> <li>Sun Raster Image (RAS, SUN)</li> <li>Tagged Image (TIF, TIFF)</li> <li>Targa (TrueVision) (TGA)</li> <li>Windows Bitmap (BMP)</li> <li>Windows Enhanced Metafile (EMF)</li> <li>Windows Metafile (WMF)</li> </ul>



*Load data from multiple sources into your borehole design, such as data from an LAS file and images in JPG format.*